

REV.	DESCRIPTION	DRAWN	CHECKED	APPROVED
A	NEW RELEASE	LJH 05/09/05'		

NOTES:

1. MAIN SPECIFICATIONS

- . Housing material: NYLON 66
- . Wire range: AWG#30~#24
- . Rated voltage: 250V
- . Rated current: 1A
- . Contact resistance: $\leq 30\text{m}\Omega$
- . Insulation resistance: $\geq 1000\text{M}\Omega$
- . Withstanding voltage: 500V,AC 1 minute
- . Temperature range: $-25 \sim +85^{\circ}\text{C}$
- . Recommend PC board thickness:1.6mm

Female Terminal

Wire Range		O.D of Wire
Section Area (mm ²)	AWG#	mm
0.05~0.22	30~24	0.9~1.5

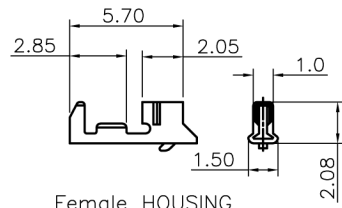
Female HOUSING

Position	DIMENSION	
	A	B
2	2.0	5.8
3	4.0	7.8
4	6.0	9.8
5	8.0	11.8
6	10.0	13.8
7	12.0	15.8
8	14.0	17.8
9	16.0	19.8
10	18.0	21.8
11	20.0	23.8
12	22.0	25.8
13	24.0	27.8
14	26.0	29.8
15	28.0	31.8

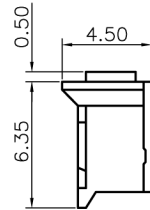
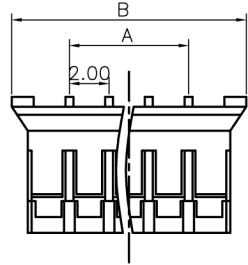
Male

Position	DIMENSION	
	A	B
2	2.0	5.9
3	4.0	7.9
4	6.0	9.9
5	8.0	11.9
6	10.0	13.9
7	12.0	15.9
8	14.0	17.9
9	16.0	19.9
10	18.0	21.9
11	20.0	23.9
12	22.0	25.9
13	24.0	27.9
14	26.0	29.9
15	28.0	31.9

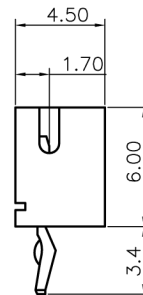
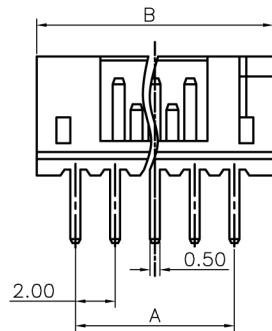
Female TERMINAL



Female HOUSING



Male V/T type



Male RIGHT ANGLE

