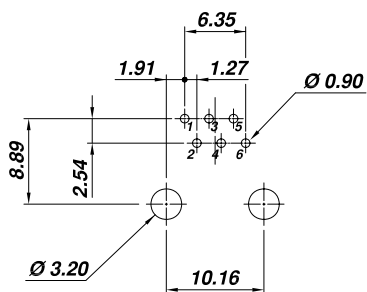
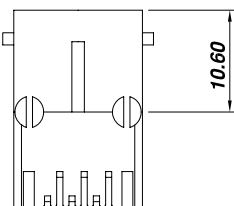
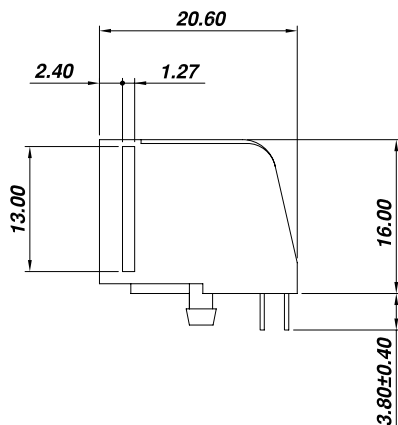
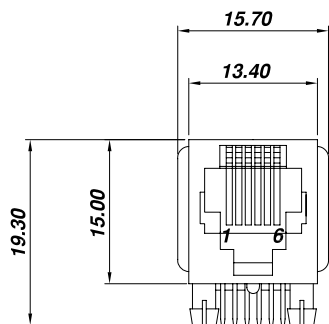


RoHS Compliant



PCB LAYOUT  
(Top View)

**SPECIFICATION :**

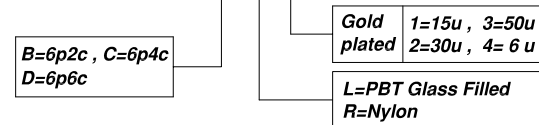
**1. Electrical Char.**

Insulation Resistance : 500M-Ohm Min.  
 Contact Resistance : 20milli-Ohm Max.  
 Rating Current : 1.5A Max.  
 Rating Voltage : 120V AC.  
 Dielectric Voltage : 1,000 Vrms 60 Sec. Min.

**2. Physical char.**

Housing (Option) :  
 PBT Glass Filled (UL 94V-0), Soldering Temperature:235°C  
 Nylon (UL 94V-0), Soldering Temperature:260°C  
 Color : Black Color  
 Spring Wire:  
 0.35mm Thickness Phosphor bronze Gold Plating Over Nickel  
 Temperature Range : - 40°C / +85°C  
 Durability : 500 Mating cycles Min.

**AJ-005-6-X-XX**



**ALLSUN CORPORATION**  
 9FL,NO.292 SEC.7 CHENG TEH ROAD.TAIPEI TAIWAN.  
 E - mail Address : allsun @ globalsources. com

**TITLE**  
**RJ11 or RJ12 SIDE ENTRY PCB JACK**  
**UL & cUL FILE NO. E131820**

**MODULAR JACKS ASSY FOR**  
**AJ-005-6-X-XX**

**SCALE SIZE DWG. NO.9602 SERIES**

NOT SCALED DRAWING	TOLERANCE UNLESS OTHERWISE NOTICE	INCH	MM	DR.	DATE
THIRD ANGLE PROJECTION	LINEAR	$.00 \pm 0.01$	$.00 \pm 0.25$	Steven	JUL-01 '08
		$.0000 \pm 0.005$	$.0000 \pm 0.13$	Johnn	JUL-01 '08
	ANGLE $\pm 30'$	RADIL	$+0.45$ $-0.15$	Billy	JUL-01 '08

DWG. NO.

AST005001-1